



## Aigilx Health's Expert integration services for your Interoperability needs

Aigilx Health specializes in optimizing Interface engines like Mirth Connect and Rhapsody, offering a range of services to unlock their full potential. Our exclusive focus and extensive experience with both engines ensure that we can help you fully leverage their capabilities.

# Why Aigilx Health is the ideal choice for healthcare data integration?



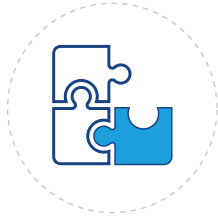
Unmatched healthcare domain expertise



Complex data integration processes made simple



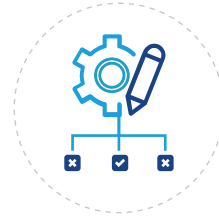
Affordable interoperability and integration services



Adaptable solutions for any modern environment



Compatible with 35+ EHR systems globally



Customized solutions for your unique needs



Minimal disruption implementation and optimization



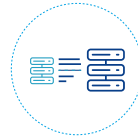


# Fully managed Healthcare Interoperability and Integration Services



## Optimize Integration with Expert Consulting

We provide expert guidance on how to optimize your integration strategy to align with your business goals. This includes identifying integration gaps and opportunities, defining use cases, creating integration roadmaps, and selecting appropriate technologies and tools.



## Seamless Integration through hassle-free Implementation

Aigilx's implementation service involves designing, building, and deploying integration solutions that enable seamless data exchange between systems and applications with the use of various messaging standards such as HL7 FHIR, EDI, and others. This includes developing custom connectors, APIs, and data pipelines.



## Effortless Upgrades and Migration

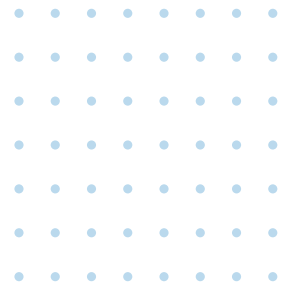
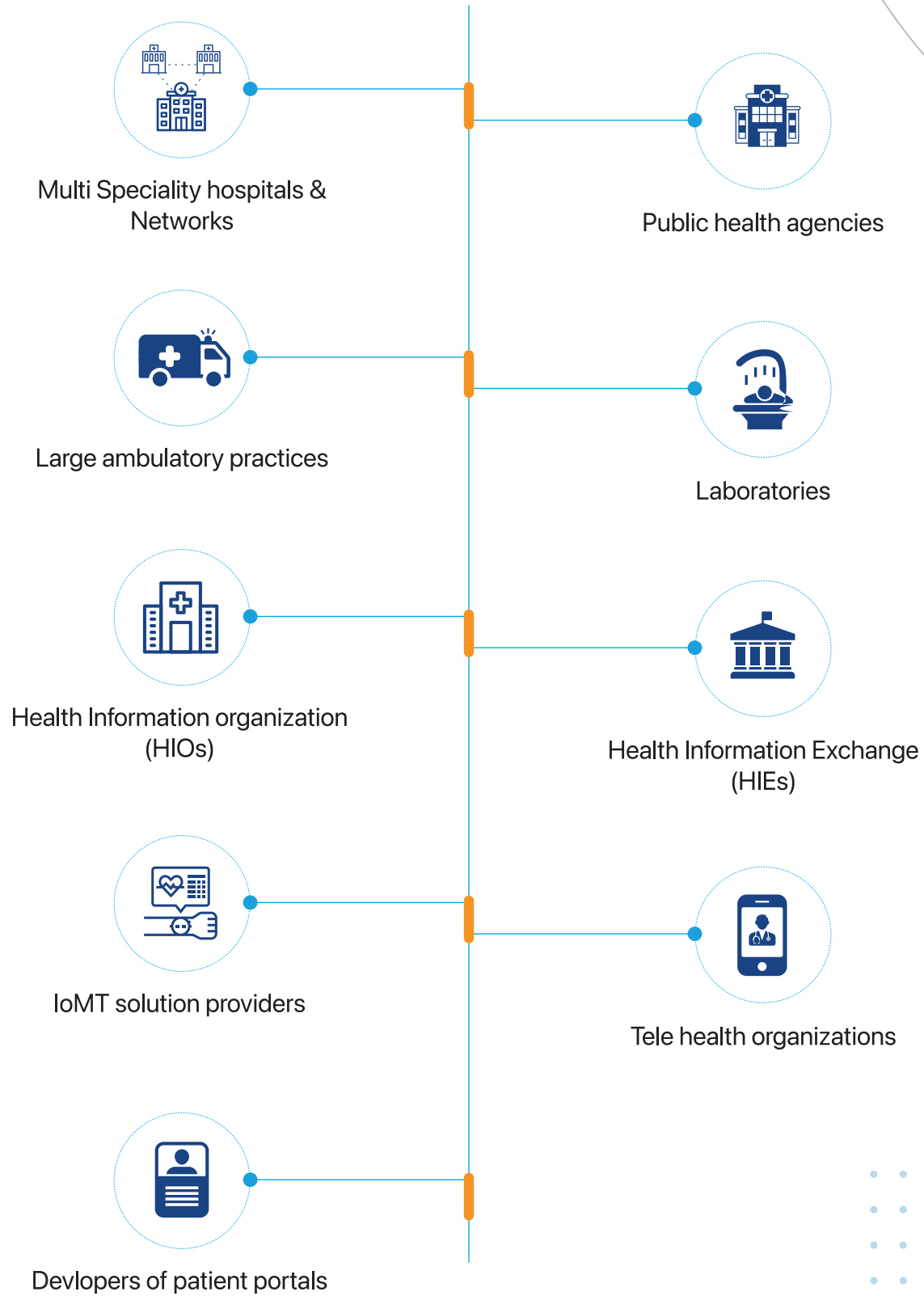
With our services, seamlessly move your integration solutions to the latest version or to a different platform by identifying the required changes and impacts, customizing an upgrade/migration plan and testing for efficiency.

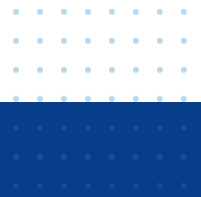


## Proactive Monitoring and Reliable Support

We provide monitoring and support to ensure that the integration solution is running efficiently and effectively. This includes proactive monitoring to identify and resolve potential issues and providing technical support to resolve any issues that arise.

# Who can benefit from our services ?

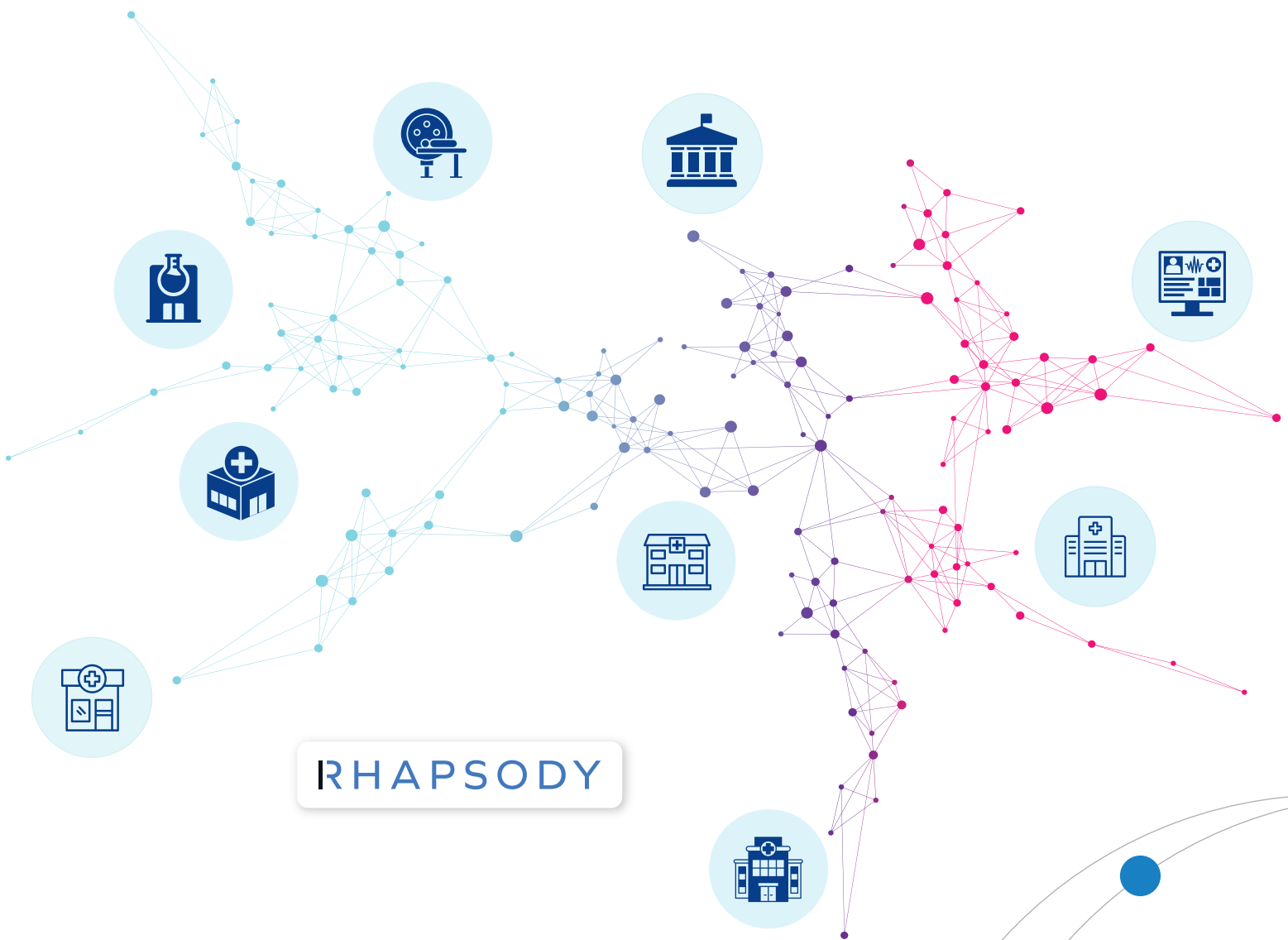




# RHAPSODY

## Optimize Rhapsody to enhance performance with Aigilx's Integration services

At Aigilx, we have extensive expertise in Rhapsody Integration Services. Our team of experts can help you maximize the full potential of Rhapsody through our extensive expertise and top-notch services. Ensure seamless and secure healthcare information exchange by optimizing your Rhapsody interface engine.



## Optimize Rhapsody for your Needs

### Custom Rhapsody Communication Points and Filters

Build custom communication points and filters to send secure messages and perform various actions.

### Rhapsody Configuration Management System

With our Configuration Management system, you can easily manage your configurations for full use of the Rhapsody interface engine.

### Rhapsody Server Settings Configuration

Our team can configure server settings to use Rhapsody engine's full potential.

### Rhapsody Watchlists

We can set up watchlists to ensure smooth operation of routes, communication points, and web services.



### REST and SOAP-based APIs for Rhapsody

Our experts can help you build REST and SOAP-based APIs using Rhapsody's Open API.

### Rhapsody IDE

We can help you maximize the Rhapsody IDE to create communication points, filters, connectors, routes, and lockers.

### Custom Rules for Efficient Rhapsody Mapping

Our experts can create custom rules for efficient mapping using Rhapsody Mapper.

### Rhapsody EDI Tools

We use EDI tools like Message Designer, Explorer, and Map Designer to create custom messaging formats, parse messages in various routes, and map according to your specific requirements.

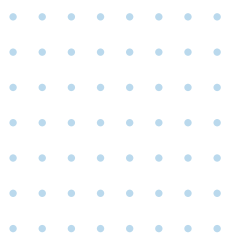
## Contact us today!

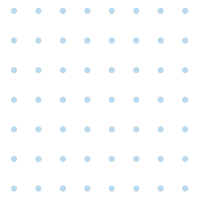
To learn more about our comprehensive suite of Rhapsody Integration Services and streamline your data integration processes with Aigilx's expertise.



# Get the Most Out of Your Mirth Connect Platform with Aigilx

Our Mirth solutions are designed to help you optimize the performance of your Mirth systems, streamline your workflows, and enhance your care delivery processes.





## Mirth Connect Integration Services

Streamline your organization's workflow with seamless integration of Mirth Connect. Our expertise includes integrating Mirth into EHR, PMS, and HIS systems via the deployment of Mirth appliances and a PostgreSQL database.

## HL7 Integration

Securely exchange crucial healthcare information such as patient data, medical histories, and prescriptions using HL7 messaging protocols on the Mirth platform.

## Mirth Mail

Effortlessly exchange text messages, referrals, and SOAP notes using the NextGen direct messaging platform with SMTP and Direct Project standards.

## Plugin Development

Customize your Mirth Connect experience with tailored plugins developed by our experts in Mirth Connect and interoperability. Enhance operations, simplify connections, and streamline workflows with our custom plugins.

## Mirth Monitoring

Stay on top of system errors with Control Center, a plug-and-play Mirth monitoring tool that offers real-time monitoring, automated alerts, and a unified dashboard.

## Comprehensive Mirth Services and Support

- Infrastructure and Performance tuning for optimal Mirth performance
- Comprehensive web service development for quick access to electronic health information
- Expert customization and extension services for optimized deployment and scaling
- Management, monitoring, and maintenance of your Mirth interface engine



## Contact us today to learn more!

Increase the efficiency of your Mirth Connect platform with Aigilx's comprehensive suite of interoperability services.